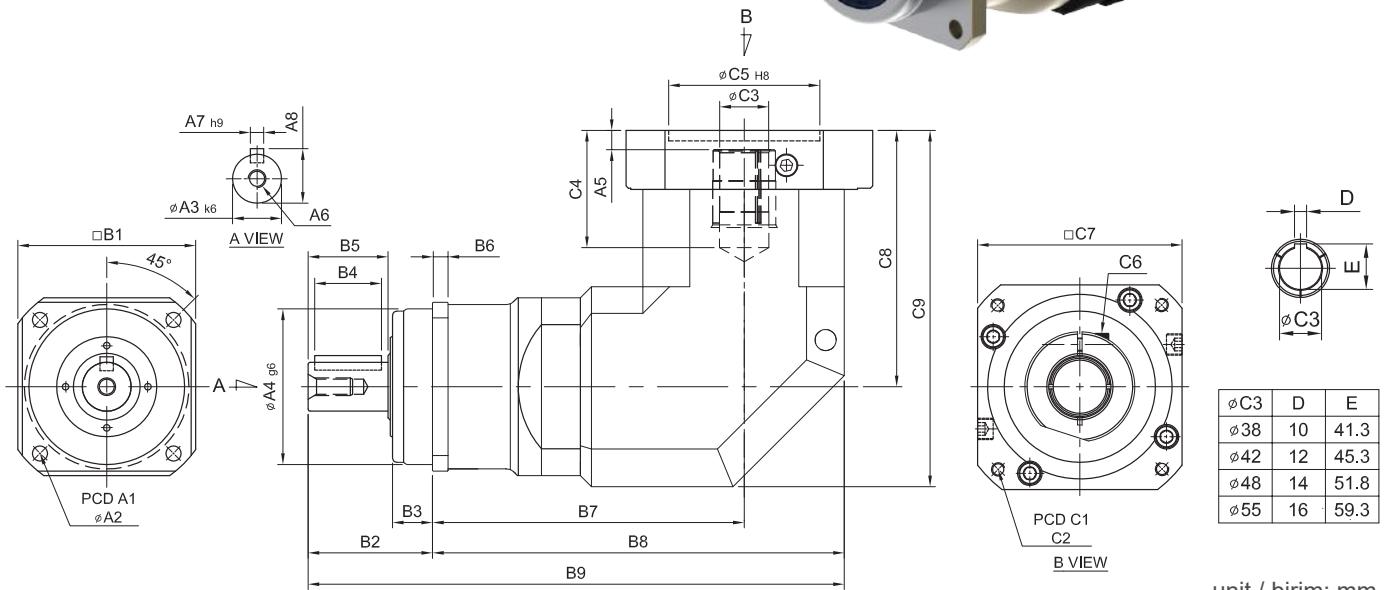
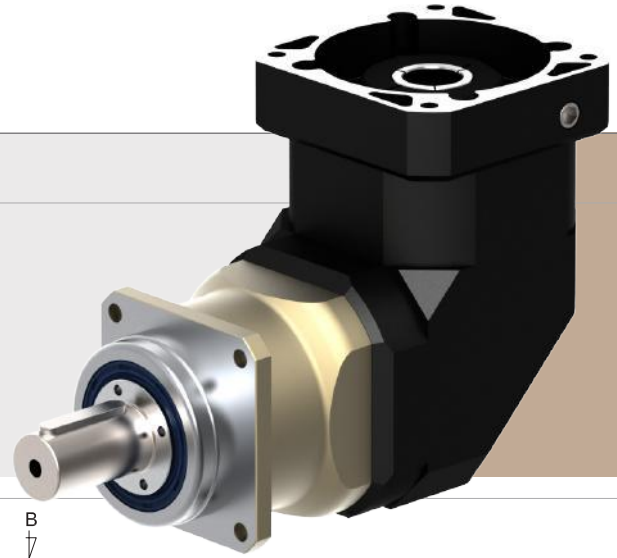


SERVOBOX

MODEL : SFL

1-Stage / Kademe

RATIO / ÇEVİRİM : 3, 4, 5, 6, 7, 8, 9, 10,
12, 14, 16, 18, 20



unit / birim: mm

| Model Code | 62 | 75 | 100 | 142 | 180 |
|-------------|--------------|----------------------|-----------------|-----------------|-------------------|
| A A1 | 68 | 85 | 120 | 165 | 215 |
| A2 | 5.5 | 6.8 | 9 | 11 | 13 |
| A3 | 16 | 22 | 32 | 40 | 55 |
| A4 | 60 | 70 | 90 | 130 | 160 |
| A5 | 6 | 9 | 10 | 10 | 12.5 · 14.5 |
| A6 | M5 x P0.8 | M8 x P1.25 | M10 x P1.5 | M12 x P1.75 | M14 x P2.0 |
| A7 | 5 | 6 | 10 | 12 | 16 |
| A8 | 18 | 24.5 | 35 | 43 | 59 |
| B B1 | 62 | 76 | 106 | 142 | 180 |
| B2 | 48 | 56 | 88 | 112 | 112 |
| B3 | 18 | 18 | 27 | 27 | 26 |
| B4 | 20 | 32 | 50 | 70 | 70 |
| B5 | 28 | 36 | 58 | 82 | 82 |
| B6 | 6 | 7 | 10 | 12 | 15 |
| B7 | 97 | 142.9 | 162 | 191 | 254.1 |
| B8 | 128 | 187.9 | 222 | 262 | 344.1 |
| B9 | 176 | 243.9 | 310 | 374 | 456.1 |
| C C1 | 70 · 75 · 90 | 90 · 110 · 115 · 145 | 115 · 145 · 165 | 145 · 165 · 200 | 200 · 215 · 265 |
| C2 | M4 · M5 · M6 | M5 · M6 · M8 | M6 · M8 · M10 | M8 · M10 · M12 | M10 · M12 · M16 |
| C3 | 14 · 19 | 19 · 22 · 24 | 24 · 28 · 32 | 28 · 32 · 35 | 38 · 42 · 48 · 55 |
| C4 | 33.5 · 41.5 | 53 · 67.5 | 67 · 77 | 85 | 117 · 119 |
| C5 | 50 · 60 · 70 | 70 · 80 · 95 · 110 | 95 · 110 · 130 | 110 · 130 · 180 | 114.3 · 180 · 230 |
| C6 | M5 x P0.8 | M6 x P1.0 | M8 x P1.25 | M10 x P1.5 | M10 x P1.5 |
| C7 | 64 · 70 · 80 | 92 · 110 · 130 | 122 · 130 · 150 | 146 · 150 · 190 | 182 · 200 · 250 |
| C8 | 77 · 85 | 115.3 | 141 | 165.7 | 235 · 237 |
| C9 | 108 · 116 | 160.3 | 201 | 236.7 | 325 · 327 |



| Model No. | | Unit/Birim | Ratio Çevrim | 62 | 75 | 100 | 142 | 180 |
|---|------------|------------|-----------------|---|-------|-------|--------|--------|
| Nominal output torque / Nominal Çıkış Torku | T_{2N} | Nm | 3 | 59 | 165 | 216 | 625 | 1,206 |
| | | | 4 | 51 | 146 | 208 | 555 | 1,069 |
| | | | 5 | 48 | 155 | 333 | 618 | 1,189 |
| | | | 6 | 45 | 150 | 315 | 583 | 1,118 |
| | | | 7 | 45 | 142 | 309 | 573 | 1,108 |
| | | | 8 | 44 | 141 | 305 | 553 | 1,070 |
| | | | 9 | 44 | 140 | 293 | 551 | 1,060 |
| | | | 10 | 43 | 138 | 291 | 549 | 1,059 |
| | | | 12 | 45 | 150 | 315 | 583 | 1,118 |
| | | | 14 | 45 | 142 | 309 | 573 | 1,108 |
| | | | 16 | 44 | 141 | 305 | 553 | 1,070 |
| | | | 18 | 44 | 140 | 293 | 551 | 1,060 |
| 20 | 43 | 138 | 291 | 549 | 1,059 | | | |
| Max. Acceleration Torque / Max. İvmelenme Torku | T_{2B} | Nm | 3 ~ 20 | 1.8 Times of Rated Output Torque / 1,8 x Nominal Çıkış Torku | | | | |
| Max. Output Torque / Max. Çıkış Torku | T_{2NOT} | Nm | 3 ~ 20 | 3 Times of Rated Output Torque / 3 x Nominal Çıkış Torku | | | | |
| Rated Input Speed / Nominal Giriş Devri | n_{1N} | rpm | 3 ~ 20 | 3,000 | 3,000 | 3,000 | 3,000 | 3,000 |
| Max. Input Speed / Max. Giriş Devri | n_{1B} | rpm | 3 ~ 20 | 6,000 | 6,000 | 6,000 | 5,000 | 4,000 |
| Backlash Ps / Min. Boşluk Oranı | | arcmin | 3 ~ 20 | - | ≤ 2 | ≤ 2 | ≤ 2 | ≤ 2 |
| Backlash P0 / Düşük Boşluk Oranı | | arcmin | 3 ~ 20 | ≤ 4 | ≤ 4 | ≤ 4 | ≤ 4 | ≤ 4 |
| Backlash P1 / Azaltılmış Boşluk Oranı | | arcmin | 3 ~ 20 | ≤ 6 | ≤ 6 | ≤ 6 | ≤ 6 | ≤ 6 |
| Backlash P2 / Standart Boşluk Oranı | | arcmin | 3 ~ 20 | ≤ 8 | ≤ 8 | ≤ 8 | ≤ 8 | ≤ 8 |
| Torsional Rigidity / Burulma Direnci | | Nm/arcmin | 3 ~ 20 | 8 | 15 | 27 | 60 | 150 |
| Max. Radial Force / Max. Radyal Yük | F_{2rB} | N | 3 ~ 20 | 2,240 | 4,150 | 8,760 | 12,750 | 17,860 |
| Max. Axial Force / Max. Aksiyel Yük | F_{2aB} | N | 3 ~ 20 | 1,920 | 3,780 | 7,500 | 10,840 | 15,180 |
| Service Life / Hizmet Ömrü | L_H | hr | 3 ~ 20 | S5 Döngüsel Çalışma: >30,000 (S1 Sürekli Çalışma: >15,000 saat) S5 Cycle Operation: >30,000 (S1 Continuous Operation: >15,000 hrs) | | | | |
| Efficiency / Verim | η | % | 3 ~ 20 | ≥ 95 | | | | |
| Operating Temperature / Çalışma Sıcaklığı | | °C | 3 ~ 20 | - 25° C ~ + 90° C | | | | |
| Lubrication / Yağlama | | | 3 ~ 20 | Synthetic Grease / Sentetik Gres | | | | |
| Protection Class / Koruma Sınıfı | | | 3 ~ 20 | IP65 | | | | |
| Mounting Position / Montaj Pozisyonu | | | 3 ~ 20 | Any / Her Yönde | | | | |
| Noise Level / Ses Seviyesi | | dB | 3 ~ 20 | ≤ 63 | ≤ 65 | ≤ 68 | ≤ 70 | ≤ 72 |
| Weight / Ağırlık ±3% | | Kg | 3 ~ 20 | 2.7 | 7.5 | 10.9 | 25.6 | 57.9 |

■ Mass Moments of Inertia / Atalet Ağırlık Momenti (kg.cm²)

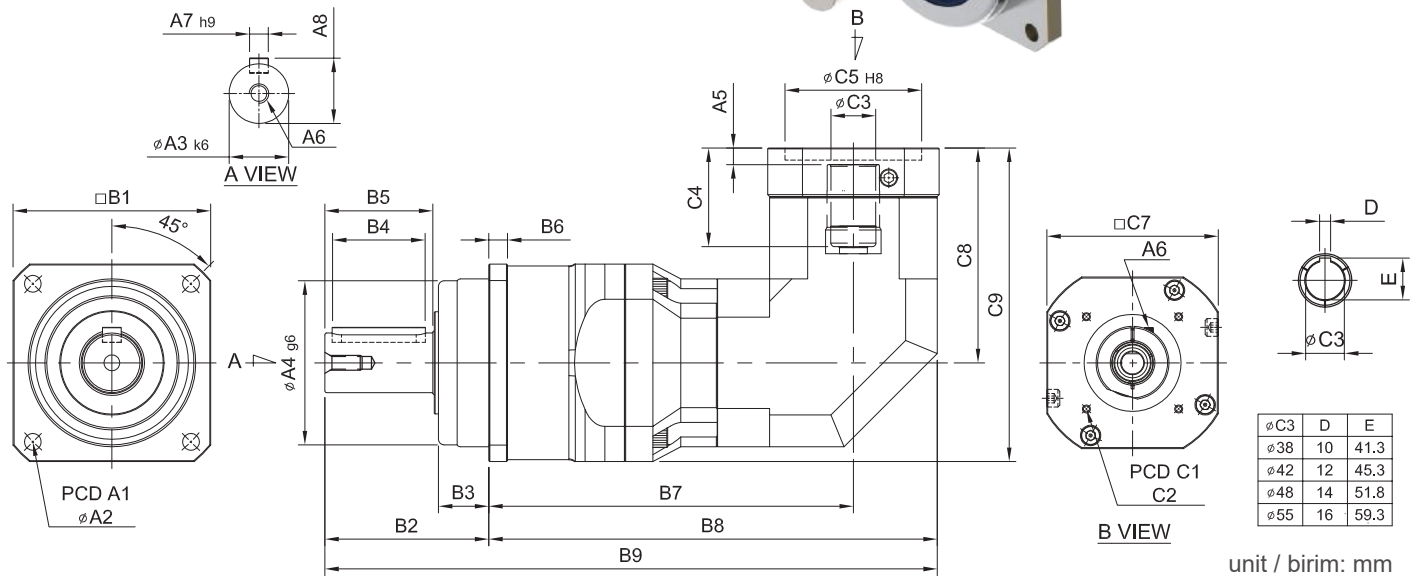
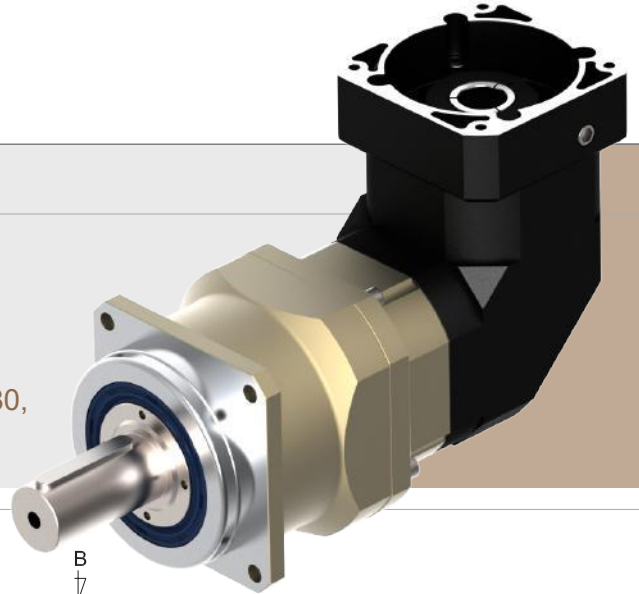
| Ratio / Çevrim | 62 | 75 | 100 | 142 | 180 |
|----------------|------|------|------|-------|-------|
| 3 | 0.30 | 2.11 | 6.42 | 18.36 | 57.65 |
| 4 | 0.28 | 2.02 | 5.61 | 18.02 | 56.17 |
| 5 | 0.26 | 2.01 | 5.42 | 17.21 | 55.05 |
| 6 | 0.24 | 2.00 | 5.33 | 16.50 | 53.44 |
| 7 | 0.24 | 1.97 | 5.09 | 15.85 | 51.10 |
| 8 | 0.24 | 1.94 | 5.06 | 14.94 | 49.03 |
| 9 | 0.24 | 1.94 | 5.04 | 14.61 | 48.08 |
| 10 | 0.24 | 1.94 | 5.02 | 14.02 | 41.33 |
| 12 | 0.22 | 1.94 | 4.98 | 13.86 | 41.12 |
| 14 | 0.22 | 1.94 | 4.95 | 13.53 | 40.50 |
| 16 | 0.21 | 1.92 | 4.91 | 13.03 | 40.11 |
| 18 | 0.21 | 1.91 | 4.87 | 12.57 | 39.73 |
| 20 | 0.20 | 1.88 | 4.75 | 12.11 | 38.65 |

SERVOBOX

MODEL : SFL

2-Stage / Kademe

RATIO / ÇEVİRİM : 15, 20, 25, 30, 35, 40, 50, 60, 70, 80,
90, 100, 120, 140, 160, 180, 200



unit / birim: mm

| Model Code | 62 | 75 | 100 | 142 | 180 |
|------------|--------------|--------------|----------------------|-----------------|-----------------|
| A | | | | | |
| A1 | 68 | 85 | 120 | 165 | 215 |
| A2 | 5.5 | 6.8 | 9 | 11 | 13 |
| A3 | 16 | 22 | 32 | 40 | 55 |
| A4 | 60 | 70 | 90 | 130 | 160 |
| A5 | 6 | 6 | 9 | 10 | 10 |
| A6 | M5 x P0.8 | M8 x P1.25 | M10 x P1.5 | M12 x P1.75 | M14 x P2.0 |
| A7 | 5 | 6 | 10 | 12 | 16 |
| A8 | 18 | 24.5 | 35 | 43 | 59 |
| B | | | | | |
| B1 | 62 | 76 | 106 | 142 | 180 |
| B2 | 48 | 56 | 88 | 112 | 112 |
| B3 | 18 | 18 | 27 | 27 | 26 |
| B4 | 20 | 32 | 50 | 70 | 70 |
| B5 | 28 | 36 | 58 | 82 | 82 |
| B6 | 6 | 7 | 10 | 12 | 15 |
| B7 | 123 | 148.3 | 195.6 | 240 | 280 |
| B8 | 145 | 179.3 | 240.6 | 300 | 351 |
| B9 | 193 | 235.3 | 328.6 | 412 | 463 |
| C | | | | | |
| C1 | 46 · 60 · 63 | 70 · 75 · 90 | 90 · 110 · 115 · 145 | 115 · 145 · 165 | 145 · 165 · 200 |
| C2 | M3 · M4 · M5 | M4 · M5 · M6 | M5 · M6 · M8 · M10 | M6 · M8 · M10 | M8 · M10 · M12 |
| C3 | 8 · 9 · 11 | 14 · 19 | 19 · 22 · 24 | 24 · 28 · 32 | 28 · 32 · 35 |
| C4 | 27 | 33.5 · 41.5 | 53 | 67 | 85 |
| C5 | 30 · 40 · 50 | 50 · 60 · 70 | 70 · 80 · 95 · 110 | 95 · 110 · 130 | 110 · 130 · 180 |
| C6 | M4 x P0.7 | M5 x P0.8 | M6 x P1.0 | M8 x P1.25 | M10 x P1.5 |
| C7 | 46 · 55 | 64 · 70 · 80 | 92 · 110 · 130 | 122 · 130 · 150 | 146 · 150 · 190 |
| C8 | 61 | 77 · 85 | 115.3 | 141 | 165.7 |
| C9 | 92 | 117 · 125 | 168.3 | 212 | 255.7 |



| Model No. | | Unit/Birim | Ratio Çevrim | 62 | 75 | 100 | 142 | 180 |
|--|------------|------------|-----------------|---|-------|-------|--------|--------|
| Nominal output torque / Nominal Çıkış Torku | T_{2N} | Nm | 15 | 59 | 142 | 298 | 625 | 1,206 |
| | | | 20 | 51 | 126 | 267 | 555 | 1,069 |
| | | | 25 | 48 | 158 | 296 | 618 | 1,189 |
| | | | 30 | 45 | 130 | 278 | 583 | 1,118 |
| | | | 35 | 45 | 128 | 275 | 573 | 1,108 |
| | | | 40 | 43 | 123 | 265 | 553 | 1,070 |
| | | | 50 | 48 | 138 | 296 | 618 | 1,189 |
| | | | 60 | 45 | 130 | 277 | 583 | 1,118 |
| | | | 70 | 45 | 128 | 275 | 573 | 1,108 |
| | | | 80 | 43 | 123 | 265 | 553 | 1,070 |
| | | | 90 | 44 | 125 | 247 | 516 | 993 |
| | | | 100 | 43 | 121 | 262 | 549 | 1,059 |
| | | | 120 | 45 | 130 | 277 | 583 | 1,118 |
| | | | 140 | 45 | 128 | 275 | 573 | 1,108 |
| | | | 160 | 43 | 123 | 265 | 553 | 1,070 |
| | | | 180 | 44 | 125 | 247 | 516 | 993 |
| | | | 200 | 43 | 121 | 262 | 549 | 1,059 |
| Max. Acceleration Torque / Max.İvmelenme Torku | T_{2B} | Nm | 15 ~ 200 | 1.8 Times of Rated Output Torque / 1,8 x Nominal Çıkış Torku | | | | |
| Max. Output Torque / Max.Çıkış Torku | T_{2NOT} | Nm | 15 ~ 200 | 3 Times of Rated Output Torque / 3 x Nominal Çıkış Torku | | | | |
| Rated Input Speed / Nominal Giriş Devri | n_{1N} | rpm | 15 ~ 200 | 3,000 | 3,000 | 3,000 | 3,000 | 3,000 |
| Max. Input Speed / Max.Giriş Devri | n_{1B} | rpm | 15 ~ 200 | 6,000 | 6,000 | 5,000 | 5,000 | 4,000 |
| Backlash Ps / Min.Boşluk Oranı | | arcmin | 15 ~ 200 | - | - | ≤ 4 | ≤ 4 | ≤ 4 |
| Backlash P0 / Düşük Boşluk Oranı | | arcmin | 15 ~ 200 | ≤ 7 | ≤ 7 | ≤ 7 | ≤ 7 | ≤ 7 |
| Backlash P1 / Azaltılmış Boşluk Oranı | | arcmin | 15 ~ 200 | ≤ 9 | ≤ 9 | ≤ 9 | ≤ 9 | ≤ 9 |
| Backlash P2 / Standart Boşluk Oranı | | arcmin | 15 ~ 200 | ≤ 12 | ≤ 12 | ≤ 12 | ≤ 12 | ≤ 12 |
| Torsional Rigidity / Burulma Direnci | | Nm/arcmin | 15 ~ 200 | 8 | 15 | 27 | 60 | 150 |
| Max. Radial Force / Max. Radyal Yük | F_{2rB} | N | 15 ~ 200 | 2,240 | 4,150 | 8,760 | 12,750 | 17,860 |
| Max. Axial Force / Max. Aksiyel Yük | F_{2aB} | N | 15 ~ 200 | 1,920 | 3,780 | 7,500 | 10,840 | 15,180 |
| Service Life / Hizmet Ömrü | L_H | hr | 15 ~ 200 | S5 Döngüsel Çalışma: >30,000 (S1 Sürekli Çalışma: >15,000 saat) S5 Cycle Operation: >30,000 (S1 Continuous Operation: >15,000 hrs) | | | | |
| Efficiency / Verim | η | % | 15 ~ 200 | ≥ 92 | | | | |
| Operating Temperature / Çalışma Sıcaklığı | | °C | 15 ~ 200 | - 25° C ~ + 90° C | | | | |
| Lubrication / Yağlama | | | 15 ~ 200 | Synthetic Grease / Sentetik Gres | | | | |
| Protection Class / Koruma Sınıfı | | | 15 ~ 200 | IP65 | | | | |
| Mounting Position / Montaj Pozisyonu | | | 15 ~ 200 | Any / Her Yönde | | | | |
| Noise Level / Ses Seviyesi | | dB | 15 ~ 200 | ≤ 63 | ≤ 65 | ≤ 68 | ≤ 70 | ≤ 72 |
| Weight / Ağırlık ±3% | | Kg | 15 ~ 200 | 11.38 | | | | |

■ Mass Moments of Inertia / Atalet ğırlık Momenti (kg.cm²)

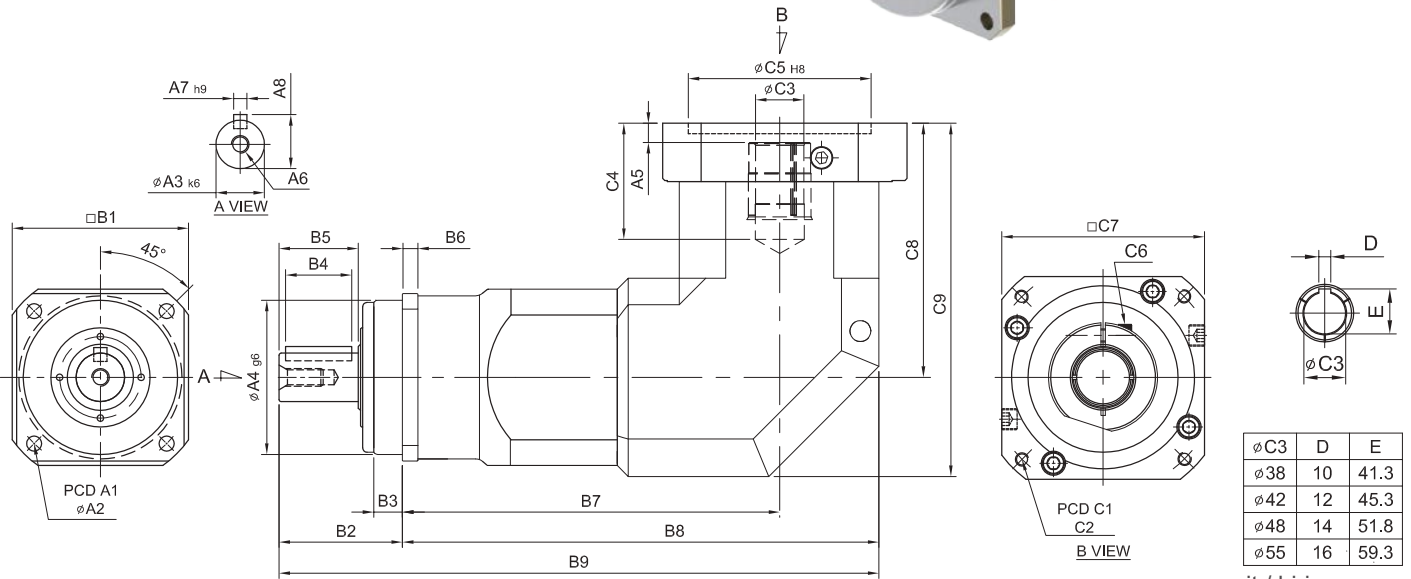
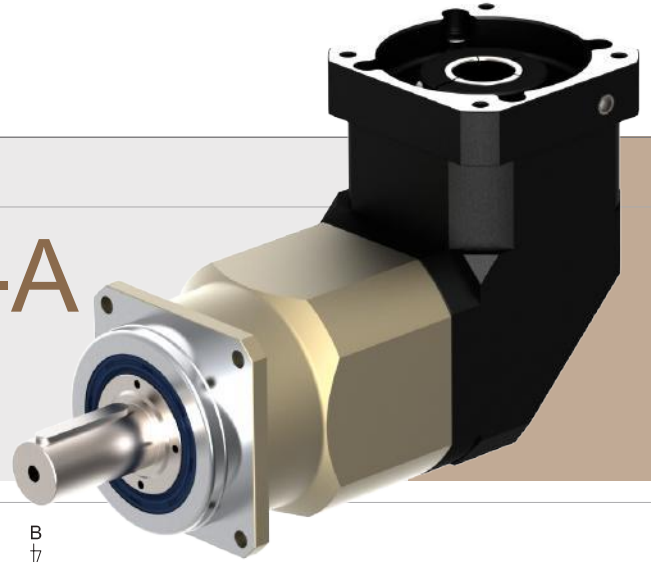
| Ratio / Çevrim | 62 | 75 | 100 | 142 | 180 |
|----------------|------|------|------|------|------|
| 15 | 0.09 | 0.34 | 2.20 | 6.85 | 26.2 |
| 20 | 0.09 | 0.34 | 2.20 | 6.85 | 26.2 |
| 25 | 0.09 | 0.34 | 2.20 | 6.85 | 23.1 |
| 30 | 0.09 | 0.34 | 2.20 | 6.85 | 23.1 |
| 35 | 0.09 | 0.34 | 2.20 | 6.85 | 23.1 |
| 40 | 0.09 | 0.34 | 2.20 | 6.85 | 23.1 |
| 50 | 0.09 | 0.34 | 2.20 | 6.85 | 23.1 |
| 60 | 0.09 | 0.34 | 2.20 | 6.85 | 23.1 |
| 70 | 0.09 | 0.34 | 2.20 | 6.85 | 23.1 |
| 80 | 0.09 | 0.34 | 2.20 | 6.85 | 23.1 |
| 90 | 0.09 | 0.34 | 2.20 | 6.85 | 23.1 |
| 100 | 0.09 | 0.34 | 2.20 | 6.85 | 23.1 |
| 120 | 0.03 | 0.30 | 1.86 | 6.20 | 21.2 |
| 140 | 0.03 | 0.30 | 1.86 | 6.20 | 21.2 |
| 160 | 0.03 | 0.30 | 1.86 | 6.20 | 21.2 |
| 180 | 0.03 | 0.30 | 1.86 | 6.20 | 21.2 |
| 200 | 0.03 | 0.30 | 1.86 | 6.20 | 21.2 |

SERVOBOX

MODEL : SFL-A

2-Stage / Kademe

RATIO / KADEME : 15, 20, 25, 30, 35, 40, 50,
60, 70, 80, 100, 140, 200



unit / birim: mm

| Model Code | 62A | 75A | 100A | 142A | 180A |
|------------|--------------|----------------------|-----------------|-----------------|-------------------|
| A1 | 68 | 85 | 120 | 165 | 215 |
| A2 | 5.5 | 6.8 | 9 | 11 | 13 |
| A3 | 16 | 22 | 32 | 40 | 55 |
| A4 | 60 | 70 | 90 | 130 | 160 |
| A5 | 6 | 9 | 10 | 10 | 12.5 · 14.5 |
| A6 | M5 x P0.8 | M8 x P1.25 | M10 x P1.5 | M12 x P1.75 | M14 x P2.0 |
| A7 | 5 | 6 | 10 | 12 | 16 |
| A8 | 18 | 24.5 | 35 | 43 | 59 |
| B1 | 62 | 76 | 106 | 142 | 180 |
| B2 | 48 | 56 | 88 | 112 | 112 |
| B3 | 18 | 18 | 27 | 27 | 26 |
| B4 | 20 | 32 | 50 | 70 | 70 |
| B5 | 28 | 36 | 58 | 82 | 82 |
| B6 | 6 | 7 | 10 | 12 | 15 |
| B7 | 130.8 | 173.9 | 206 | 258 | 335.1 |
| B8 | 161.8 | 218.9 | 266 | 329 | 425.1 |
| B9 | 209.8 | 274.9 | 354 | 441 | 537.1 |
| C1 | 70 · 75 · 90 | 90 · 110 · 115 · 145 | 115 · 145 · 165 | 145 · 165 · 200 | 200 · 215 · 265 |
| C2 | M4 · M5 · M6 | M5 · M6 · M8 | M6 · M8 · M10 | M8 · M10 · M12 | M10 · M12 · M16 |
| C3 | 14 · 19 | 19 · 22 · 24 | 24 · 28 · 32 | 28 · 32 · 35 | 38 · 42 · 48 · 55 |
| C4 | 33.5 · 41.5 | 53 · 67.5 | 67 · 77 | 85 | 117 · 119 |
| C5 | 50 · 60 · 70 | 70 · 80 · 95 · 110 | 95 · 110 · 130 | 110 · 130 · 180 | 114.3 · 180 · 230 |
| C6 | M5 x P0.8 | M6 x P1.0 | M8 x P1.25 | M10 x P1.5 | M10 x P1.5 |
| C7 | 64 · 70 · 80 | 92 · 110 · 130 | 122 · 130 · 150 | 146 · 150 · 190 | 182 · 200 · 250 |
| C8 | 77 · 85 | 115.3 | 141 | 165.7 | 235 · 237 |
| C9 | 108 · 116 | 160.3 | 201 | 236.7 | 325 · 327 |



| Model No. | | Unit/Birim | Ratio Çevrim | 62A | 75A | 100A | 142A | 180A |
|---|------------|------------|-----------------|---|-------|-------|--------|--------|
| Nominal output torque / Nominal Çıkış Torku | T_{2N} | Nm | 15 | 59 | 165 | 216 | 625 | 1,206 |
| | | | 20 | 51 | 146 | 208 | 555 | 1,069 |
| | | | 25 | 48 | 155 | 333 | 618 | 1,189 |
| | | | 30 | 45 | 150 | 315 | 583 | 1,118 |
| | | | 35 | 45 | 142 | 309 | 573 | 1,108 |
| | | | 40 | 51 | 122 | 208 | 555 | 1,069 |
| | | | 50 | 48 | 155 | 333 | 618 | 1,189 |
| | | | 60 | 45 | 150 | 315 | 583 | 1,118 |
| | | | 70 | 45 | 142 | 309 | 573 | 1,108 |
| | | | 80 | 51 | 146 | 208 | 555 | 1,069 |
| | | | 100 | 48 | 155 | 333 | 618 | 1,189 |
| | | | 140 | 45 | 142 | 309 | 573 | 1,108 |
| 200 | 43 | 138 | 291 | 549 | 1,059 | | | |
| Max. Acceleration Torque / Max. İvmelenme Torku | T_{2B} | Nm | 15 ~ 200 | 1.8 Times of Rated Output Torque / 1,8 x Nominal Çıkış Torku | | | | |
| Max. Output Torque / Max. Çıkış Torku | T_{2NOT} | Nm | 15 ~ 200 | 3 Times of Rated Output Torque / 3 x Nominal Çıkış Torku | | | | |
| Rated Input Speed / Nominal Giriş Devri | n_{1N} | rpm | 15 ~ 200 | 3,000 | 3,000 | 3,000 | 3,000 | 3,000 |
| Max. Input Speed / Max. Giriş Devri | n_{1B} | rpm | 15 ~ 200 | 6,000 | 6,000 | 5,000 | 5,000 | 4,000 |
| Backlash P _s / Min. Boşluk Oranı | | arcmin | 15 ~ 200 | - | ≤ 4 | ≤ 4 | ≤ 4 | ≤ 4 |
| Backlash P ₀ / Düşük Boşluk Oranı | | arcmin | 15 ~ 200 | ≤ 7 | ≤ 7 | ≤ 7 | ≤ 7 | ≤ 7 |
| Backlash P ₁ / Azaltılmış Boşluk Oranı | | arcmin | 15 ~ 200 | ≤ 9 | ≤ 9 | ≤ 9 | ≤ 9 | ≤ 9 |
| Backlash P ₂ / Standart Boşluk Oranı | | arcmin | 15 ~ 200 | ≤ 12 | ≤ 12 | ≤ 12 | ≤ 12 | ≤ 12 |
| Torsional Rigidity / Burulma Direnci | | Nm/arcmin | 15 ~ 200 | 8 | 15 | 27 | 60 | 150 |
| Max. Radial Force / Max. Radyal Yük | F_{2rB} | N | 15 ~ 200 | 2,240 | 4,150 | 8,760 | 12,750 | 17,860 |
| Max. Axial Force / Max. Aksiyel Yük | F_{2aB} | N | 15 ~ 200 | 1,920 | 3,780 | 7,500 | 10,840 | 15,180 |
| Service Life / Hizmet Ömrü | L_H | hr | 15 ~ 200 | S5 Döngüsel Çalışma: >30,000 (S1 Sürekli Çalışma: >15,000 saat) S5 Cycle Operation: >30,000 (S1 Continuous Operation: >15,000 hrs) | | | | |
| Efficiency / Verim | η | % | 15 ~ 200 | ≥ 92 | | | | |
| Operating Temperature / Çalışma Sıcaklığı | | °C | 15 ~ 200 | - 25° C ~ + 90° C | | | | |
| Lubrication / Yağlama | | | 15 ~ 200 | Synthetic Grease / Sentetik Gres | | | | |
| Protection Class / Koruma Sınıfı | | | 15 ~ 200 | IP65 | | | | |
| Mounting Position / Montaj Pozisyonu | | | 15 ~ 200 | Any / Her Yönde | | | | |
| Noise Level / Ses Seviyesi | | dB | 15 ~ 200 | ≤ 63 | ≤ 65 | ≤ 68 | ≤ 70 | ≤ 72 |
| Weight / Ağırlık ±3% | | Kg | 15 ~ 200 | 3.5 | 11.1 | 16.8 | 29.9 | 66.1 |

■ Mass Moments of Inertia / Atalet Ağırlık Momenti (kg.cm²)

| Ratio / Çevrim | 62A | 75A | 100A | 142A | 180A |
|----------------|------|------|------|------|-------|
| 15 | 0.15 | 0.60 | 3.21 | 9.18 | 28.82 |
| 20 | 0.14 | 0.51 | 2.80 | 7.51 | 23.56 |
| 25 | 0.13 | 0.45 | 2.71 | 7.40 | 23.24 |
| 30 | 0.12 | 0.43 | 2.66 | 7.32 | 22.91 |
| 35 | 0.12 | 0.42 | 2.54 | 7.15 | 22.40 |
| 40 | 0.14 | 0.51 | 2.80 | 7.51 | 23.56 |
| 50 | 0.13 | 0.45 | 2.71 | 7.40 | 23.24 |
| 60 | 0.12 | 0.43 | 2.66 | 7.32 | 22.91 |
| 70 | 0.12 | 0.42 | 2.54 | 7.15 | 22.40 |
| 80 | 0.14 | 0.51 | 2.80 | 7.51 | 23.56 |
| 100 | 0.13 | 0.45 | 2.71 | 7.40 | 23.24 |
| 140 | 0.12 | 0.42 | 2.54 | 7.15 | 22.40 |
| 200 | 0.11 | 0.41 | 2.48 | 7.02 | 22.14 |